

# Test Interpretation



SAT<sup>®</sup>

# Today's Targets

- By the end of today's presentation you will be able to:
  - Describe the different parts that make up an SAT Total Score.
  - Define College & Career Readiness
  - Determine if your score meets the College Board's College & Career Readiness Benchmarks
  - Describe how your score compares to scores of students admitted to various colleges and universities for the fall of 2017
  - Describe how to sign up and link a College Board and Khan Academy Account

# Score Ranges

## PSAT 8/9

Evidenced Based Reading and Writing = 120-720

Math = 120-720

**Total Score = 240-1440**

## PSAT10 & PSAT/NMSQT

Evidenced Based Reading and Writing = 160-760

Math = 160-760

**Total Score = 320-1520**

## SAT

Evidenced Based Reading and Writing = 200-800

Math = 200-800

**Total Score = 400-1600**

# Example Test Score

## Your Total Score

**1010** | 400 to 1600

**50th**

Nationally Representative Sample Percentile

**36th**

SAT User Percentile — National

## Essay Scores

**4** | 2 to 8

Reading

**4** | 2 to 8

Analysis

**4** | 2 to 8

Writing

## Section Scores

**490** | 200 to 800

Your Evidence-Based Reading and Writing Score

**44th** Nationally Representative Sample Percentile

**31st** SAT User Percentile — National



You've met the benchmark!

**520** | 200 to 800

Your Math Score

**57th** Nationally Representative Sample Percentile

**45th** SAT User Percentile — National



You scored below the benchmark.

## Test Scores

**26** | 10 to 40

Reading

**23** | 10 to 40

Writing and Language

**26.0** | 10 to 40

Math

## Cross-Test Scores | 10 to 40

**26**

Analysis in History/Social Studies

**23**

Analysis in Science

## Subscores | 1 to 15

**7**

Command of Evidence

**10**

Words in Context

**7**

Expression of Ideas

**6**

Standard English Conventions

**10**

Heart of Algebra

**9**

Problem Solving and Data Analysis

**8**

Passport to Advanced Math

Get your full report online [studentscores.collegeboard.org](https://studentscores.collegeboard.org)

Steps to college readiness.

## How Did I Score Compared to Others?

A percentile is a number between 1 and 99 that shows how your score ranks compared to other students. It represents the percentage of students whose scores are equal to or below yours. For example, if your Math score percentile is 57, that means 57 percent of test-takers have Math scores equal to or below yours.

You'll see two percentiles:

The Nationally Representative Sample Percentile shows how your score compares to the scores of all U.S. students in your grade, including those who don't typically take the test.

SAT® User Percentile — National shows how your score compares to the scores of students who typically take the test.

## Will My Scores Change and Why?

Tests are not exact measures, and many factors can affect your score. After all, no two days are the same, and if you took the SAT once a week for a month your scores would change.

That's why it helps to think of your true score as a range from a few points below to a few points above the score earned. Score ranges show how your score can change with repeated testing, assuming your skill level remains the same.

Usually, scores for Evidence-Based Reading and Writing and for Math fall in a range of roughly 30 to 40 points above or below your reported score.

Total: Your score  $\pm$  40 points.

Section: Your score  $\pm$  30 points.

Test Scores and Cross-Test Scores:

Your score  $\pm$  2 points.

Subscores: Your score  $\pm$  2 points.

## Am I on Track to Be Ready for College?

You'll see a benchmark score for each section of the SAT. The benchmarks show your college readiness. The Evidence-Based Reading and Writing benchmark is 480 while the Math benchmark is 530. This means if you score at or above the benchmark, you're on track to be ready for college when you graduate high school. If you score below the benchmark, you can still get back on track by focusing on areas where you didn't perform well. Use the detailed feedback in your online score report to see which skills you need to work on most.

# College & Career Readiness

- College and career readiness benchmarks are based on actual student success in entry-level college courses.
- The SAT benchmark scores represent a **75%** likelihood of a student achieving at least a C grade in a first-semester, credit-bearing college course in a related subject.
- Grade-level benchmark scores are based on expected student growth toward the SAT benchmarks at each grade.

# College Board Benchmarks

<b>Level</b>	<b>EBRW</b> (Evidenced Based Reading & Writing)	<b>Expected Gains</b>	<b>Math</b>	<b>Expected Gains</b>	<b>Total Score</b>	<b>Expected Gains</b>
<b>SAT</b>	<b>480</b>	<b>+20</b>	<b>530</b>	<b>+20</b>	<b>1010</b>	<b>+40</b>
<b>11TH</b>	<b>460</b>	<b>+30</b>	<b>510</b>	<b>+30</b>	<b>970</b>	<b>+60</b>
<b>10TH</b>	<b>430</b>	<b>+20</b>	<b>480</b>	<b>+30</b>	<b>910</b>	<b>+50</b>
<b>9TH</b>	<b>410</b>	<b>+20</b>	<b>450</b>	<b>+20</b>	<b>860</b>	<b>+40</b>
<b>8TH</b>	<b>390</b>		<b>430</b>		<b>820</b>	

# Average SAT Score of Students admitted in 2017

The following public universities are listed based on the frequency of transcript requests of Lake Park Students:

<u>University of Illinois</u>	<u>1380-1530</u>
<u>Illinois State University</u>	<u>1160-1190</u>
<u>Northern Illinois University</u>	<u>1160-1190</u>
<u>University of Indiana</u>	<u>1140-1370</u>
<u>Purdue University</u>	<u>1160-1410</u>
<u>University of Iowa</u>	<u>1070-1400</u>
<u>University of Wisconsin</u>	<u>1290-1490</u>

# Average SAT Score of Students admitted in 2017

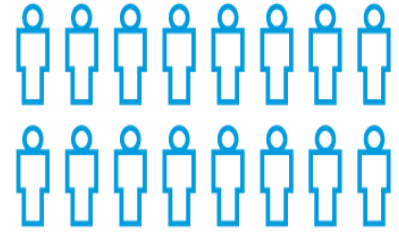
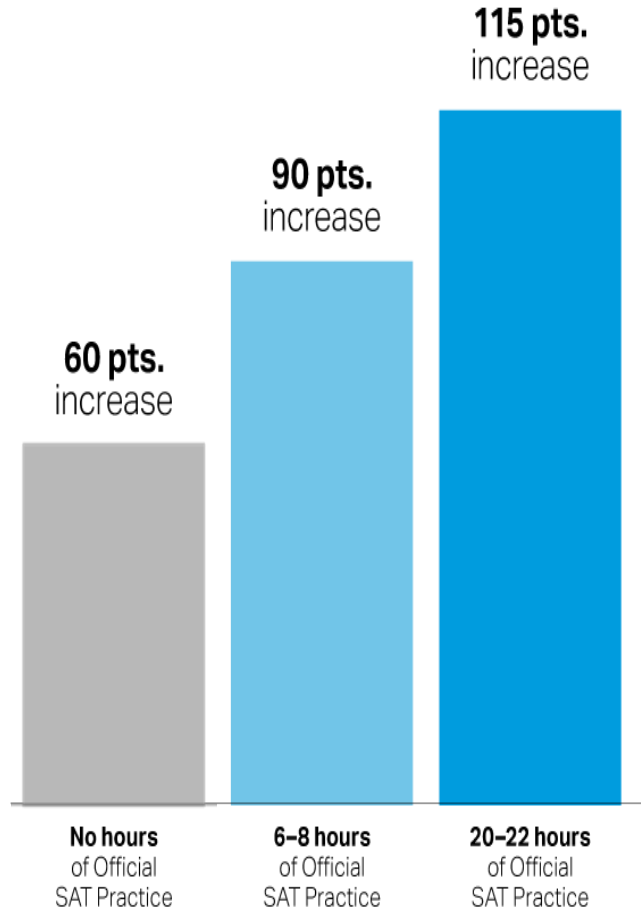
The following private colleges and universities are listed based on the frequency of transcript requests of Lake Park Students:

<u>Carthage College</u>	<u>1090-1340</u>
<u>DePaul University</u>	<u>1080-1290</u>
<u>Elmhurst College</u>	<u>1000-1300</u>
<u>Loyola University</u>	<u>1130-1330</u>
<u>Northwestern University</u>	<u>1480-1580</u>



# Score Improvements with and Without Official SAT Practice

Average number of points gained from PSAT/NMSQT to SAT correlated to hours spent practicing on Khan Academy



**16,000**  
students saw gains of 200 points or more.

Based on 250,000 students from the Class of 2017

# Evidence

[KHAN Video](#)

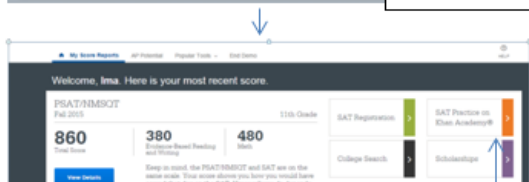
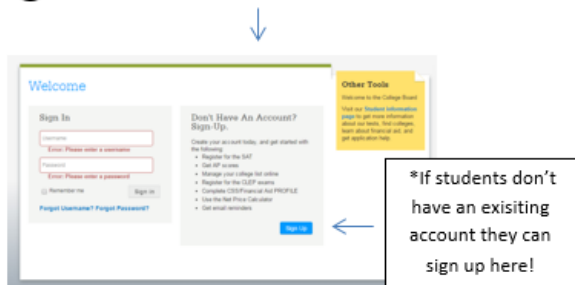
# Directions Handout



## Steps to Linking with Official SAT Practice

- 1: Visit (<https://www.khanacademy.org/sat>)
- 2: Have students click on **Start practicing**
- 3: Students can sign in to Khan Academy using an existing account, Gmail (easiest), Facebook, or create a new account.
- 4: Once logged in, students will have two options to choose from:

**(A)** Sign in to CollegeBoard.org and send your test results to Khan Academy. **OR** **(B)** Take your first diagnostic quiz



**\*Students will need to take 4 short quizzes (Math + Reading & Writing) to establish their personalized practice. In addition, there is online dynamic practice with feedback for the optional essay on the ESSAY Tab!**

# Steps to link your College Board and Khan Academy Accounts

## Step 1

Log in to or create your Khan Academy account at **satpractice.org**

## Step 2

When prompted, agree to link your Khan Academy and College Board accounts

## Step 3

Sign in or create your College Board Account and hit “Send” to send your scores

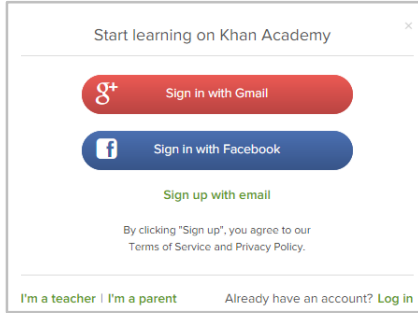
**Sign up. Link up.  
Get practicing.**



# Step 1:

## Create a Khan Academy Account

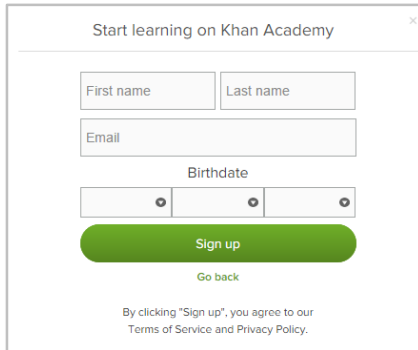
- ▶ Log in to or create your Khan Academy account



Go to [satpractice.org](https://satpractice.org)

Click green button labeled “Check it out now”

Sign in with Gmail, Facebook, or click “Sign up with email”



▶ If you click Sign in with Gmail or Facebook, enter in your username and password for either these accounts and you are signed in

▶ If you click “Sign up with email” Enter in First Name/Last name/Email/Birthdate and click “Sign Up”

▶ An email will be sent to your account to verify; sign in to your email

▶ Open email from Khan Academy accounts and click on the “Finish Signing Up” button

▶ A welcome screen will appear where you will enter username and password and

## Step 2:

# Begin to link your Khan Academy Account to College Board

- ▶ You have logged into Khan Academy for the first time and will be asked if you would like to send PSAT results
- ▶ If you already have a Khan Academy account, a prompt will appear asking if you want to send your PSAT results to Khan Academy
- ▶ After choosing that option, you will be directed to [collegeboard.org](https://collegeboard.org)

Welcome to Official SAT® Practice KHANACADEMY Exit SAT\_practice

We'd love to start by practicing what you missed on the PSAT.

To make this happen, we'll have you sign in to CollegeBoard.org and send your PSAT results to Khan Academy. Doing this will enable you to skip our diagnostic quizzes. We will also receive updates about the date of your upcoming SAT.

If you haven't taken the PSAT yet, no worries, let's take your first diagnostic quiz.

A. Sign in to CollegeBoard.org and send your PSAT results to Khan Academy

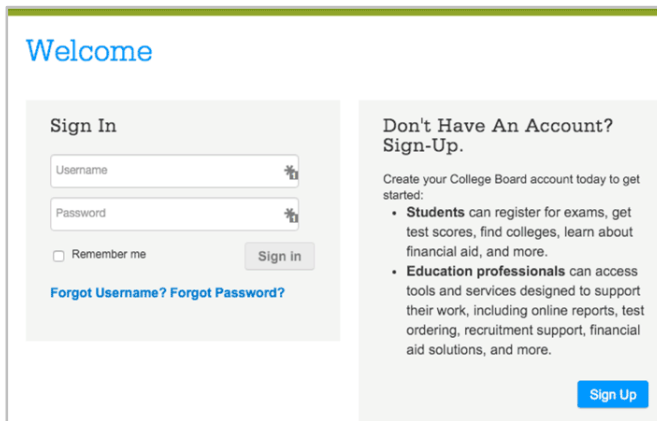
B. Take your first diagnostic quiz

Do 3 questions 3 Sign in to CollegeBoard.org

## Step 3:

# Create a College Board Account

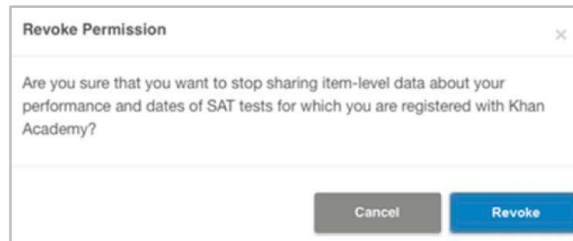
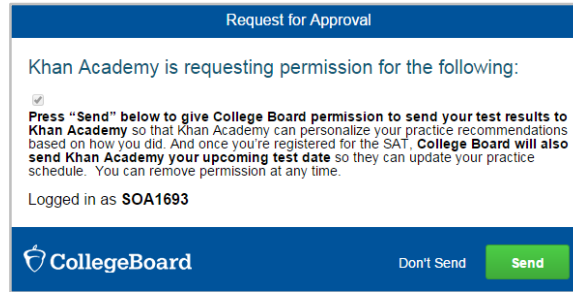
- ▶ Sign in to your College Board account; if you do not have a College Board account, click 'Sign Up' to create one.
- ▶ The steps for creating a College Board account are:
  - ▶ Click on the “Sign up” blue box
  - ▶ Fill in the fields to create your student account ensuring all information is correct
  - ▶ Click “Next” at the bottom when all fields are completed
  - ▶ You are now Signed In



The screenshot shows the College Board account creation/sign-in page. At the top left, the word "Welcome" is displayed in blue. Below it, there is a "Sign In" section with two input fields: "Username" and "Password", each with a small icon to its right. Below the password field is a checkbox labeled "Remember me" and a "Sign in" button. Below these fields are two links: "Forgot Username?" and "Forgot Password?". To the right of the sign-in section is a "Don't Have An Account? Sign-Up." section. It contains the text "Create your College Board account today to get started:" followed by two bullet points: "• **Students** can register for exams, get test scores, find colleges, learn about financial aid, and more." and "• **Education professionals** can access tools and services designed to support their work, including online reports, test ordering, recruitment support, financial aid solutions, and more." At the bottom right of this section is a blue "Sign Up" button.

## Step 4: And Hit Send to Link Accounts

- ▶ After successfully logging in to your College Board account, you will be asked for permission to link your accounts.
- ▶ After clicking “Send” you will be redirected to SAT practice on the Khan Academy site.
- ▶ You can remove the link at any time, by clicking on “Revoke” which is found in College Board account settings.





# Juniors Only

- Juniors who scored below the benchmark *in both* categories on the **Practice SAT** will be required to attend a SAT tutorial during half of their lunch hour 4 days a week starting 2<sup>nd</sup> semester until the SAT on April 10<sup>th</sup>.
- Unless they can prove they have logged at least 20 hours on Khan Academy.

Level	EBRW	Math
SAT	480	530